

Part number:

**HYDROMA**

HYDRAULICKÉ SYSTÉMY

**HIDROMA**  
SYSTEMS

UKŁADY HYDRAULICZNE

**HYDROMA**

ГИДРАВЛИЧЕСКИЕ СИСТЕМЫ

Tipo / Type

**FPR-\*.\***

Sez./Section

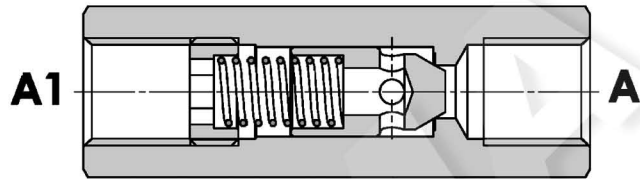
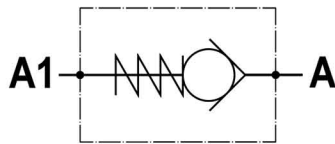
**D**

Pag./Page

**025/1**

**Valvola di ritegno unidirezionale**  
**Check valve**

Rev.03-2022/06



#### SPECIFICHE TECNICHE

**Materiali:** corpo in acciaio. L'otturatore conico guidato è in acciaio trattato termicamente. La superficie esterna è protetta mediante zincatura.

**Portata:** fino a 310 l/min

**Pressione max.:** 350 bar, vedasi tabella a parte

**Pressione di apertura:** standard 0,5 bar, a richiesta 2.5-5-10 bar

#### TECHNICAL SPECIFICATIONS

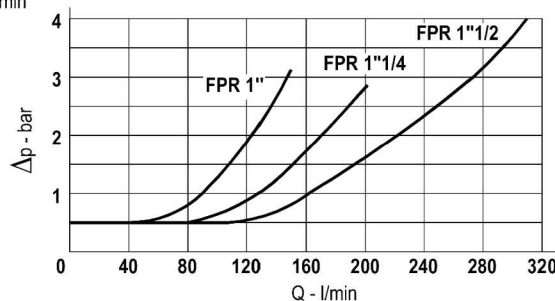
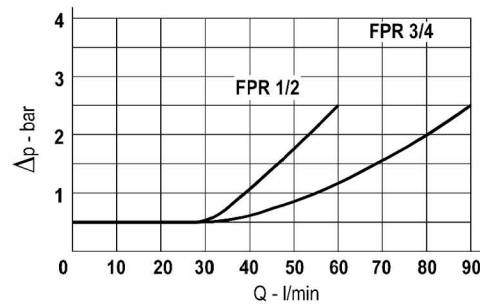
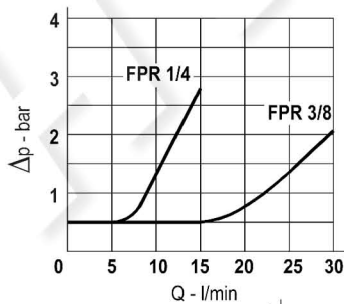
**Materials:** body is steel made. Guided poppet is in hardened steel. External surface is zinc plated.

**Rated flow:** up to 310 l/min

**Max. pressure:** 350 bar, see data sheet

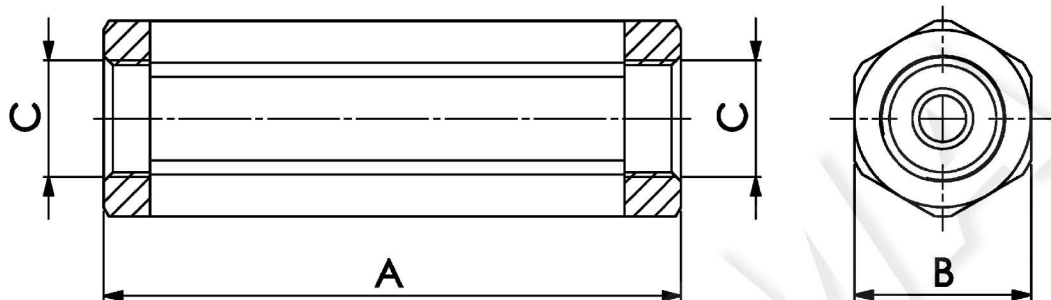
**Cracking pressure:** 0,5 bar standard, on request: 2.5-5-10 bar

#### DIAGRAMMA PERDITE DI CARICO PRESSURE DROP CURVES



**Valvola di ritegno unidirezionale**  
**Check valve**

Rev.03-2022/06



| TIPO<br>TYPE | PORTATA MAX.<br>MAX FLOW | PRESSIONE MAX.<br>MAX PRESSURE | A   | B  | C      | PESO<br>WEIGHT |
|--------------|--------------------------|--------------------------------|-----|----|--------|----------------|
|              | L/MIN                    | BAR                            | mm  | mm | BSPP   | Kg             |
| FPR 1/4"     | 15                       | 350                            | 62  | 19 | 1/4"   | 0,10           |
| FPR 3/8"     | 30                       | 350                            | 68  | 24 | 3/8"   | 0,17           |
| FPR 1/2"     | 60                       | 320                            | 78  | 27 | 1/2"   | 0,22           |
| FPR 3/4"     | 90                       | 300                            | 88  | 36 | 3/4"   | 0,45           |
| FPR 1"       | 150                      | 250                            | 112 | 46 | 1"     | 0,97           |
| FPR 1 1/4"   | 200                      | 250                            | 142 | 55 | 1 1/4" | 1,68           |
| FPR 1 1/2"   | 310                      | 210                            | 155 | 60 | 1 1/2" | 2,10           |

**ESEMPIO DI ORDINAZIONE - ORDERING CODE EXAMPLE**

**F P R**    1 / 4    2 , 5

- 1/4 - 1/4" BSPP
  - 3/8 - 3/8" BSPP
  - 1/2 - 1/2" BSPP
  - \* 3/4 - 3/4" BSPP
  - 1 - 1" BSPP
  - 1 1/4 - 1 1/4" BSPP
  - 1 1/2 - 1 1/2" BSPP
- Connessioni - Port sizes

- 0.5 bar (std)
- 2.5 bar
- 5 bar \*
- 10 bar

Pressione apertura ritegno, omettere se std  
Cracking pressure, omit if standard