

Part number:

HYDROMA

HYDRAULICKÉ SYSTÉMY

**HIDROMA
SISTEMS**

UKLADY HYDRAULICZNE

HYDROMA

ГИДРАВЛИЧЕСКИЕ СИСТЕМЫ

Portata max.
Max flow

25 l/min

Pressione max.
Max pressure

310 bar

Attacchi
Ports

1 1/4" Gas-SAE4

Codice

L 7 0 0 U J W V X Y Z

Code

Modello

VS70 - VS75

Model

Descrizione: Deviatori di flusso a 3 vie

Description: 3 ways flow diverters

SCHEMA

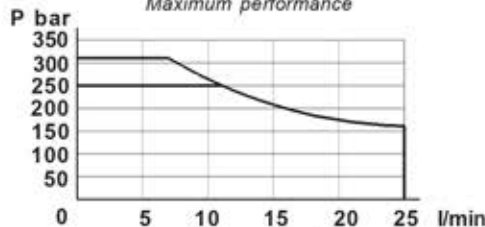
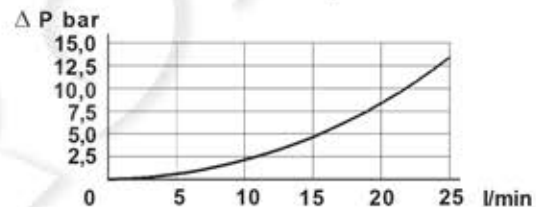
CIRCUIT

Codice Code	Schema Circuit	* Posizione transitoria * Transit position	Codice Code	Schema Circuit	* Posizione transitoria * Transit position
W			W		
3A			3N		

CARATTERISTICHE TECNICHE

TECHNICAL FEATURES

V	Drenaggio Drain	Schema Circuit	Tipi di circuiti - Spool types				Pressione Pressure max bar
			3A	3N			
I	Int. D.I.		250	250			
E	Ext. D.E.		310	310			

Prestazioni massime
Maximum performanceCadute di pressione
Pressure dropTrafilamenti interni sugli utilizzi C
Internal leakage on C ports

MIN cm ³ /min	MAX cm ³ /min
7	15

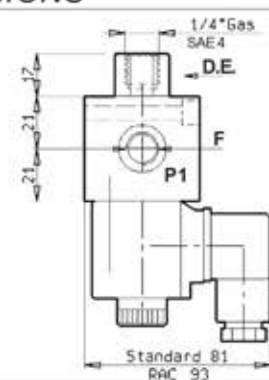
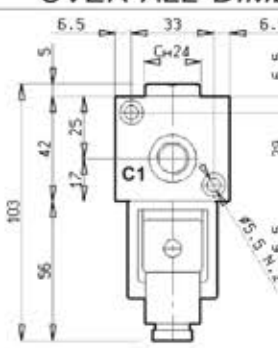
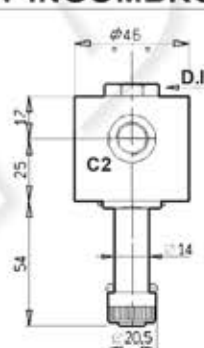
Olio minerale, viscosità 32 cSt, 40°C, pressione 100 bar.

Mineral oil with 32 cSt viscosity, at 40°C and 100 bar pressure.

DIMENSIONI DI INGOMBRO

OVER-ALL DIMENSIONS

U	Attacchi (F) Ports (F)	Modello Model
2	1/4" Gas	VS 70
A	SAE4	VS 75
Pesi Weights		0.90 kg



MOMENTI MASSIMI DI SERRAGGIO

MAXIMUM BLOCKING TORQUE

Cannotto Tube	Ghiera blocco bobina Coil retainer nut	Viti di fissaggio Fixing screws
ch. 22mm: 20+22Nm	Øe 20.5: 5+6Nm	N°2 DIN 912-8.8 M5x50: 5+6Nm

ACCESSORI

OPTIONALS

J	Comando manuale di emergenza a vite EF Screwed manual override EF Riferimento - Reference: LC04ZEF	J	Comando manuale di emergenza a pulsante EP Push-button manual override EP Riferimento - Reference: 271-05098
-F		-P	