

Part number:

**093-10046**

**HYDROMA**

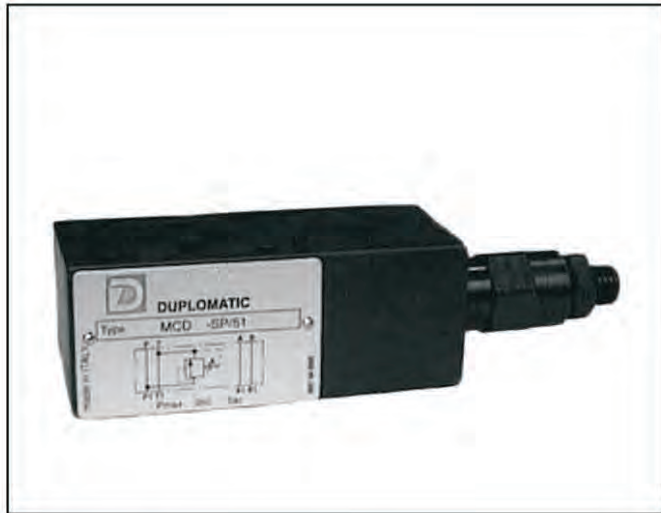
HYDRAULICKÉ SYSTÉMY

**HIDROMA  
SISTEMS**

UKŁADY HYDRAULICZNE

**HYDROMA**

ГИДРАВЛИЧЕСКИЕ СИСТЕМЫ



# MCD

## DIRECT OPERATED PRESSURE RELIEF VALVE SERIES 51

### MODULAR VERSION

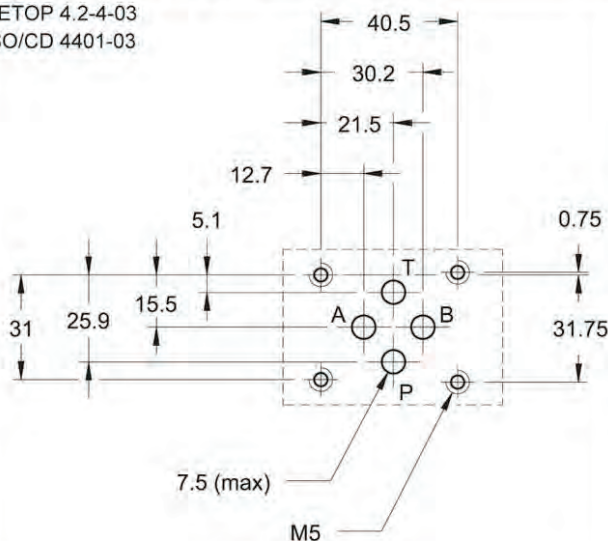
### CETOP 03

**p** max 350 bar

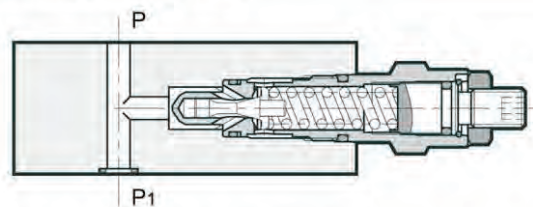
**Q** max (see performance ratings table)

### MOUNTING INTERFACE

CETOP 4.2-4-03  
ISO/CD 4401-03



### OPERATING PRINCIPLE



- The MCD valve is a direct operated pressure relief valve made as a modular version with mounting surface according to the CETOP and ISO standards.
- It can be assembled with all CETOP 03 modular valves without use of pipes, using suitable tie-rods or bolts.
- It is available in versions for single adjustment on one control line or dual on two control lines and with four different pressure adjustment ranges.
- This valve is normally used as a hydraulic circuit pressure limiting device or as a limiting device of the pressure peaks generated during the movement of hydraulic actuators.
- It is normally supplied with a hexagonal head adjustment screw, locking nut and limitation of the maximum adjustment travel.

### CONFIGURATIONS (see Hydraulic symbols table)

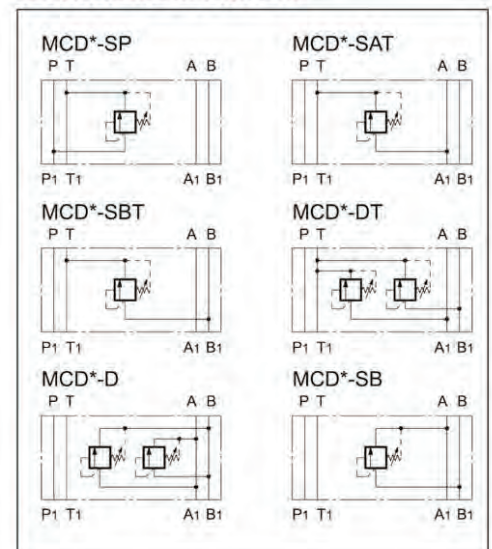
- Configuration "SP": controls the pressure on line P with discharge in T.
- Configuration "SAT": controls the pressure on line A with discharge in T.
- Configuration "SBT": controls the pressure on line B with discharge in T.

- Configuration "DT": controls the pressure on lines A-B with discharge in T.
- Configuration "D": controls the pressure on lines A-B with crossed discharges
- Configuration "SB": controls the pressure on line B with discharge in A.

### PERFORMANCE RATINGS (measured with mineral oil of viscosity 36cSt at 50°C)

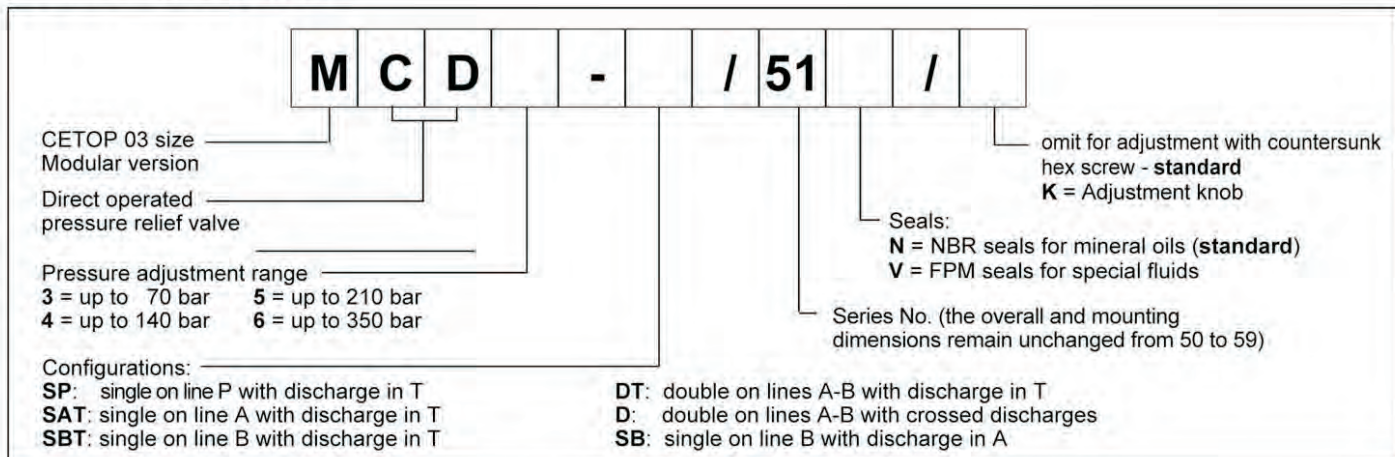
Maximum operating pressure	bar	350
Minimum controlled pressure	see $\Delta p$ -Q diagram	
Maximum flow rate in the controlled lines	l/min	50
Maximum flow rate in the free lines	l/min	75
Ambient temperature range	°C	-20 ÷ +50
Fluid temperature range	°C	-20 ÷ +70
Fluid viscosity range	cSt	2,8 ÷ 380
Recommended filtration	$\mu\text{m}$ absolute	$\leq 25$
Recommended viscosity	cSt	25
Mass: MCD - SP / MCD - SAT / MCD - SBT / MCD - SB	kg	1,4
MCD - DT / MCD - D	kg	2,0

### HYDRAULIC SYMBOLS

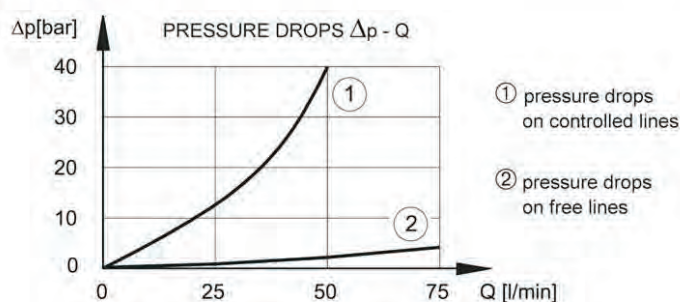
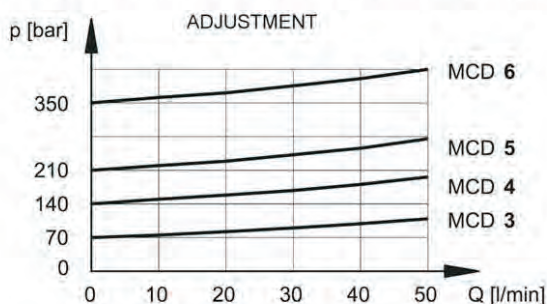




## 1 - IDENTIFICATION CODE



## 2 - CHARACTERISTIC CURVES (values obtained with viscosity of 36 cSt at 50°C)



## 3 - HYDRAULIC FLUIDS

Use mineral oil-based hydraulic fluids, with the addition of suitable anti-frothing and anti-oxidizing agents.  
For the use of other types (water glycol, phosphate esters and others), please consult our technical department.

## 4 - OVERALL AND MOUNTING DIMENSIONS

