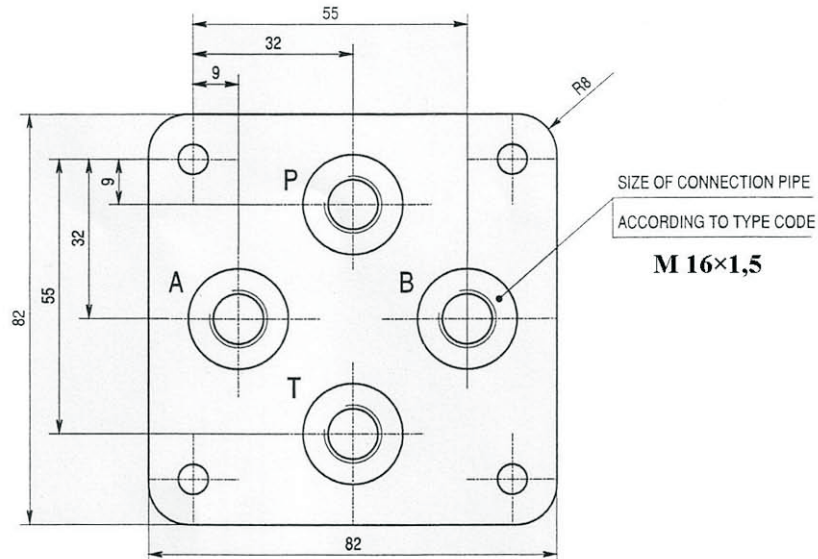
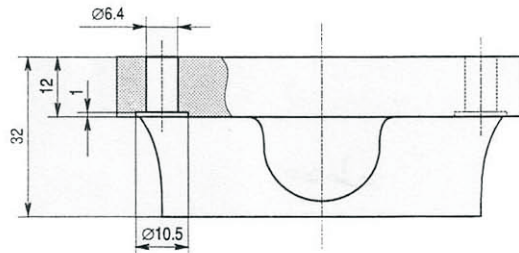
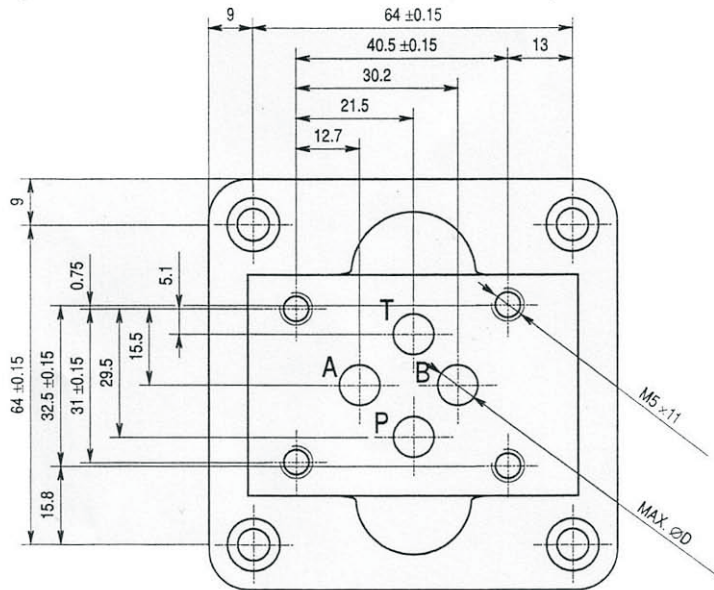


INSTALLATION DIMENSIONS DR x - 06 / xx - 1

FIG. 1

Connection plate Dn 06 for a distribution valve Dn 06, nominal pressure 32 MPa.

all dimensions in [mm]



Type code	Size of connection pipe Dn	Max Ø D [mm]	Weight [kg]
DR 1-06/04-1	04	7.3	0.9
DR 2-06/08-1 *)	08	8.1	0.9

*) can be used only for RSE 2-06

Connection dimensions of the cavity, appropriate pipe fittings and plugs are drawn in the enclosure of this catalogue.