

Part number:

HYDROMA

HYDRAULICKÉ SYSTÉMY

**HIDROMA
SISTEMS**

UKŁADY HYDRAULICZNE

HYDROMA

ГИДРАВЛИЧЕСКИЕ СИСТЕМЫ

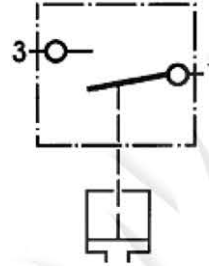
Pressure switch with NO contact and plug connection Type 804

Width across flats 24

Height 43

Length of thread 9

Flat-pin plug 6.3



Pg 9 with strain relief
optionally with coupler plug
plug connection swivelling 6 x 60°

Type = reference number	804-1	804-10	804-20	804-100	804-200	804-100 K	804-200 K
Range of adjustment, bar	0.2-1	1-10	2-20	10-100	20-200	10-100	20-200
Overpressure safety		300 bar			600 bar		
Sealing element*			diaphragm			rotary seal	
Reproducibility		~ 5%			2 - 5%		
Hysteresis	~ 5-10%						
Switching frequency	200/min						
Voltage, max.	250 volt						
Current, max.	2 amp.						
Type of protection	IP 55						
Temperature, permissible	-20° to +100° C						
Weight	0.09 kg						
Thread	G 1/8", G 1/8" tap., NPT 1/8", G 1/4", M 10x1 tap., M 12x1.5						

The functions breaking, making or changing relate to rising pressure.

* Please indicate medium in your order.