

Part number:

006-10303

HYDROMA

HYDRAULICKÉ SYSTÉMY

**HIDROMA
SYSTEMS**

UKŁADY HYDRAULICZNE

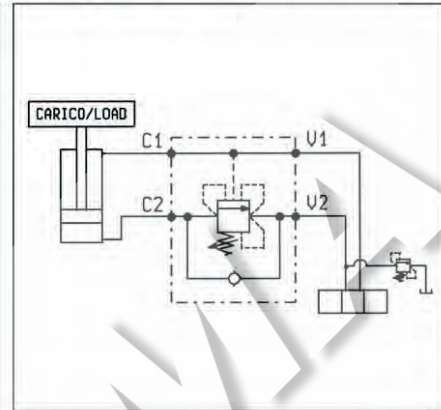
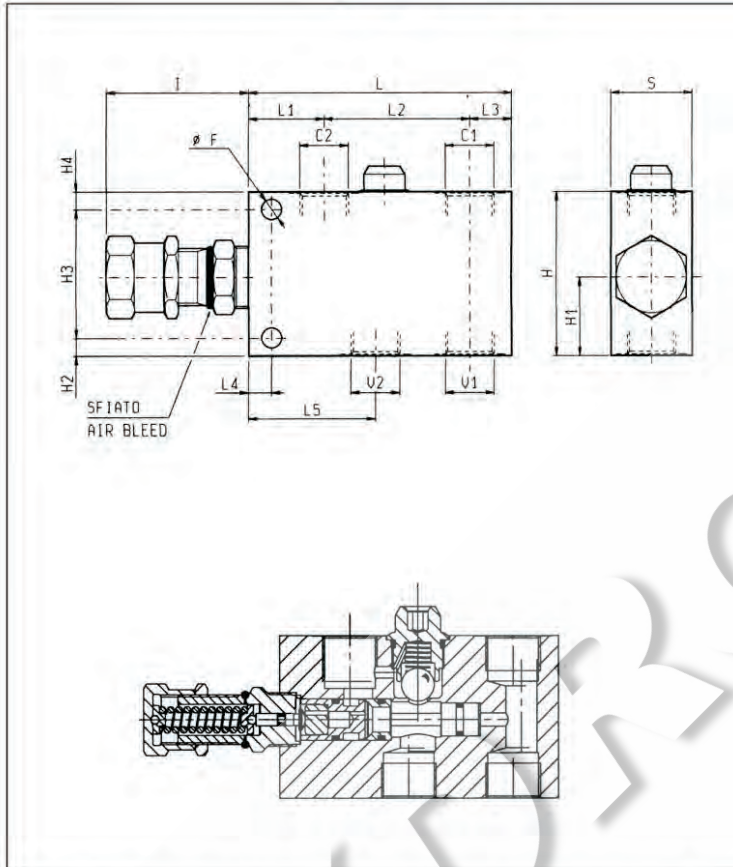
HYDROMA

ГИДРАВЛИЧЕСКИЕ СИСТЕМЫ

**BILANCIAMENTO, SEMPLICE EFFETTO, VERSIONE "CC"
PILOT ASSISTED, "CC" TYPE OVERCENTRE**

VBSO-SE-CC

05.41.06 - X - Y - Z



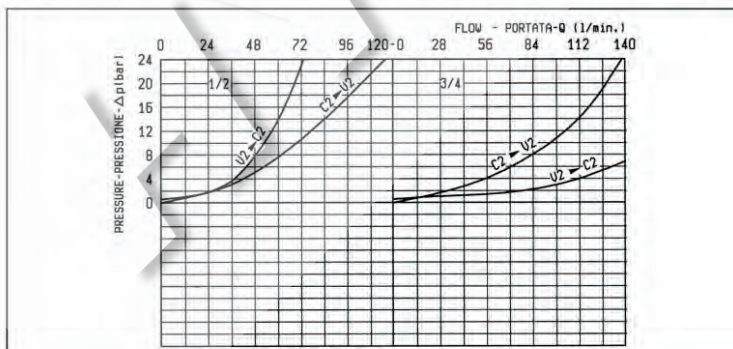
DATI TECNICI / TECHNICAL DATA

Pressione max. 350 bar
Max. pressure

Portata max. vedi diagramma
Flow see performance graph

Taratura della valvola: almeno 1.3 volte superiore alla pressione indotta dal carico
Pressure setting: at least 1.3 times the load induced pressure

40	62.5	10	22	79	34	135	65	70	10	38	90	10.5			3/4	1.420
35	54.5	10	18	62.5	32.5	113	65	54	8	32	70	8.5			1/2	0.905
S	L5	L4	L3	L2	L1	L	I	H3	H2	H1	H	F			Y	Resoling Weight (g)



X	RAPPORTO DI PILOTAGGIO PILOT RATIO
02	8.2 : 1
10	3.2 : 1

Z	MOLLE / SPRINGS				
	Campo taratura min - max bar Adj. press. range bar	Incremento press. bar / giro vite Press. increase bar / turn	Taratura standard bar (Q = 5 l/min) Std. setting bar (made at 5 l/min)	Cod. ordinazione Ordering code	Colore Colour
20	60-210	54	200	03.51.01.075	verde green
35	100-350	95	350	03.51.01.059	giallo yellow

Y	ATTACCHI / PORT SIZE V1-V2-C1-C2	
	03	G 1/2
04	G 3/4	