

Part number:

**006-10282**

**HYDROMA**

HYDRAULICKÉ SYSTÉMY

**HIDROMA  
SISTEMS**

UKŁADY HYDRAULICZNE

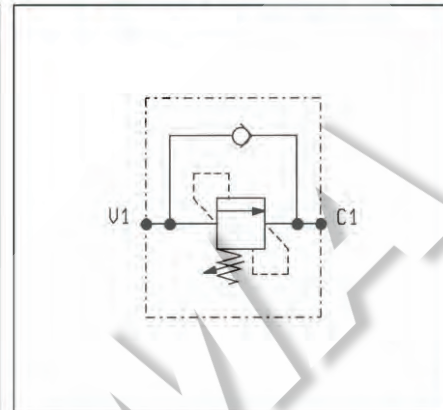
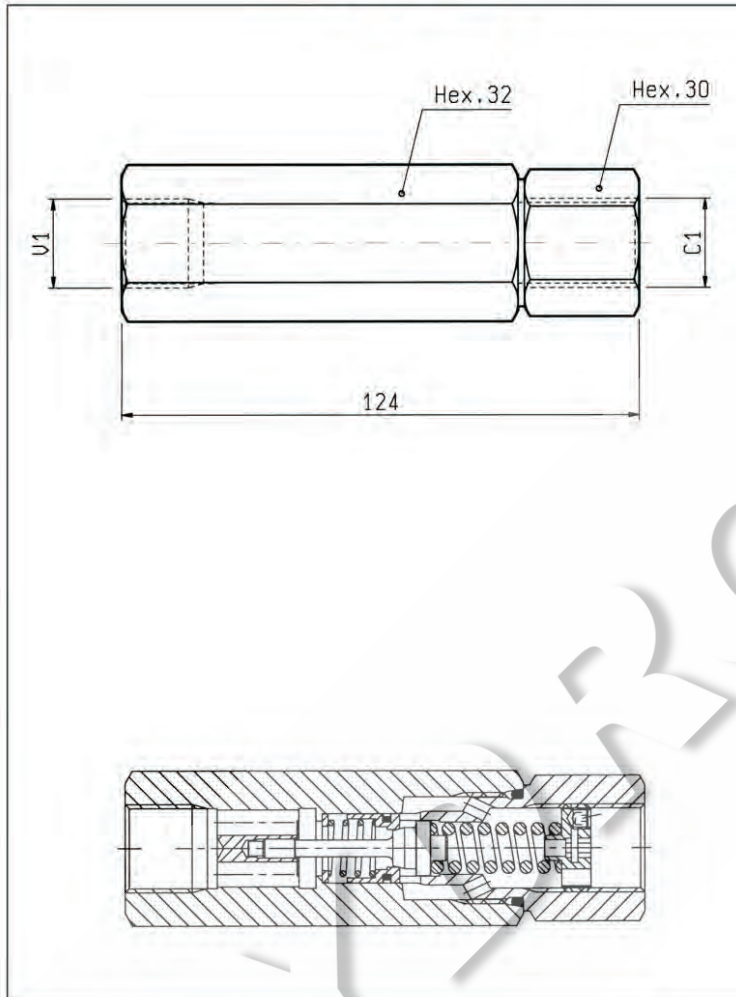
**HYDROMA**

ГИДРАВЛИЧЕСКИЕ СИСТЕМЫ

**SEQUENZA, DIRETTE  
DIRECT SEQUENCE**

**VSQ-30-LM**

**05.21.16.00 - Y - Z**



**DATI TECNICI / TECHNICAL DATA**

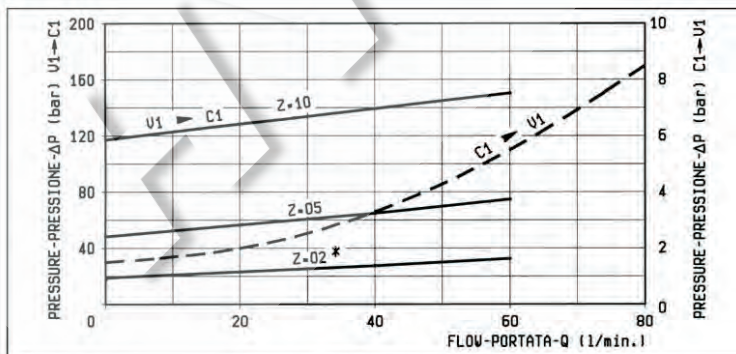
Pressione di lavoro max. 350 bar  
Max. working pressure

Portata max. 80 l/min  
Flow max.

Peso 0.6 kg  
Weight

Curve caratteristiche misurate con pressione nulla sull'attacco "C1".  
Pressure drop curves are shown with zero back pressure on "C1" port.

(\* Z = 02 è fornito soltanto per applicazioni speciali)  
(\* Z = 02 is only supplied for special applications)



Z	MOLLE / SPRINGS				
	Campo taratura min - max bar Adj. press. range bar	Incremento press. bar / giro vite Press. increase bar / turn	Taratura standard bar (Q = 5 l/min) Std. setting bar (made at 5 l/min)	Cod. ordinazione Ordering code	Colore Colour
02*	(10-30)	(9)	(20)	*(03.51.01.155)	*verde *green
05	25-70	21	50	03.51.01.106	verde green
10	30-120	47	120	03.51.01.171	giallo yellow

Y	ATTACCHI / PORT SIZE
	V1-C1
03	G 1/2