

Part number:

**006-10202**

**HYDROMA**

HYDRAULICKÉ SYSTÉMY

**HIDROMA  
SISTEMS**

UKŁADY HYDRAULICZNE

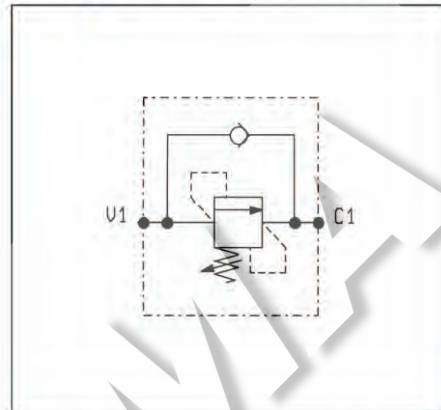
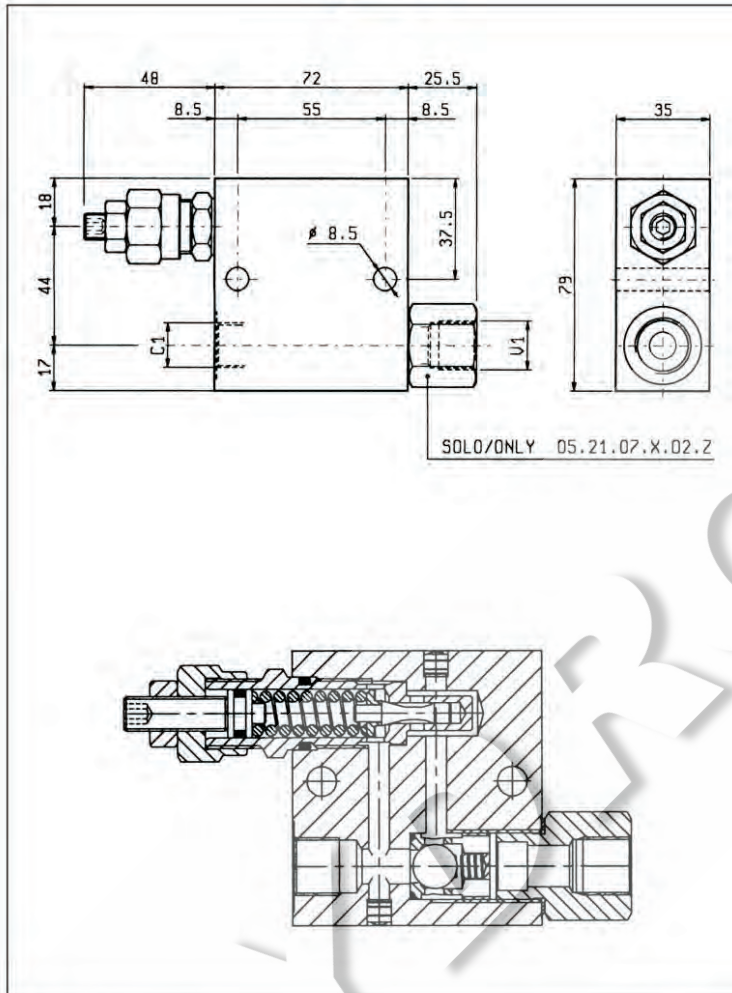
**HYDROMA**

ГИДРАВЛИЧЕСКИЕ СИСТЕМЫ

SEQUENZA, DIRETTE  
DIRECT SEQUENCE

**VSQ-30**

**05.21.07 - X - Y - Z**



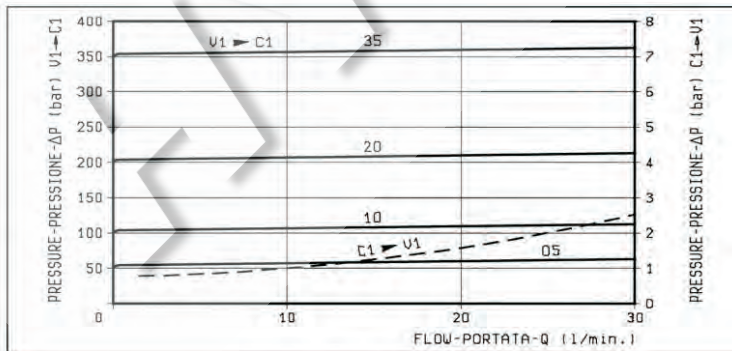
**DATI TECNICI / TECHNICAL DATA**

Pressione di lavoro max. 350 bar  
Max. working pressure

Portata max. 30 l/min  
Flow max.

Peso 0.81 kg  
Weight

Curve caratteristiche misurate con pressione nulla sull'attacco "C1".  
Pressure drop curves are shown with zero back pressure on "C1" port.



X	REGOLAZIONI ADJUSTMENTS	
03	vite esterna esagono incassato leakproof hex. socket screw	
04	volantino e dado handknob and locknut	
	cappello per piombatura sealing cap codice / ordering code 03.05.01.003	

Z	MOLLE / SPRINGS				
	Campo taratura min - max bar Adj. press. range bar	Incremento press. bar / giro vite Press. increase bar / turn	Taratura standard bar (Q = 5 l/min) Std. setting bar (made at 5 l/min)	Cod. ordinazione Ordering code	Colore Colour
05	10-50	11.5	50	03.51.01.077	nero black
10	30-100	23.5	100	03.51.01.076	blu blue
20	50-210	47	200	03.51.01.075	verde green
35	100-350	82	350	03.51.01.059	giallo yellow

Y	ATTACCHI / PORT SIZE	
	V1-C1	
02	G 3/8	
03	G 1/2	