

Part number:

006-10327

HYDROMA

HYDRAULICKÉ SYSTÉMY

**HIDROMA
SYSTEMS**

UKŁADY HYDRAULICZNE

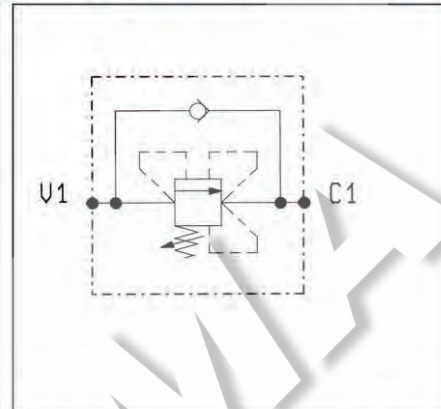
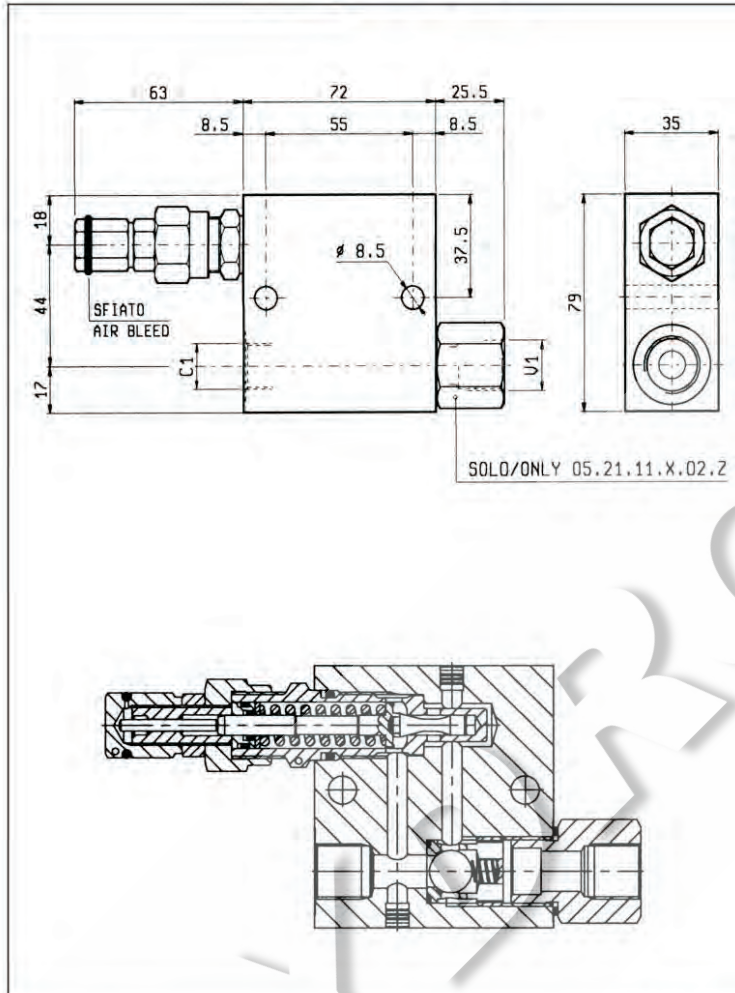
HYDROMA

ГИДРАВЛИЧЕСКИЕ СИСТЕМЫ

SEQUENZA, DIRETTE, OTTURATORE CONICO, COMPENSATE
DIRECT, POPPET TYPE, SELF COMPENSATED SEQUENCE

VSQ-CC-30

05.21.11 - X - Y - Z



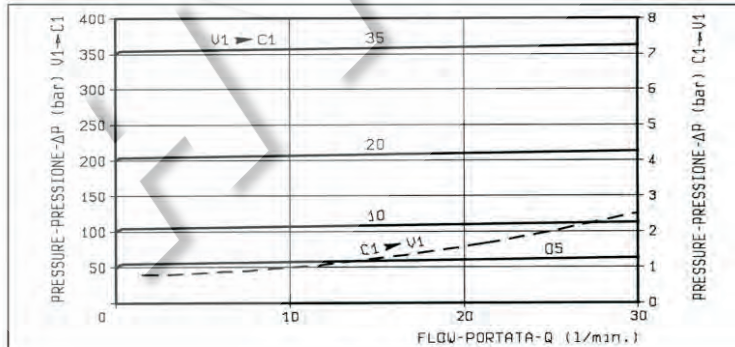
DATI TECNICI / TECHNICAL DATA

Pressione di lavoro max. 350 bar
Max. working pressure

Portata max. 30 l/min
Flow max.

Peso 0.81 kg
Weight

Funzionamento corretto con pressione sul circuito secondario non inferiore a 20 bar.
For good performance, the pressure in the secondary circuit should not drop below 20 bar.



X	REGOLAZIONI ADJUSTMENTS	
03	vite interna esagono incassato leakproof inner hex. socket screw	
	cappello per piombatura sealing cap codice / ordering code 03.05.01.002	

Z	MOLLE / SPRINGS				
	Campo taratura min - max bar Adj. press. range bar	Incremento press. bar / giro vite Press. increase bar / turn	Taratura standard bar (Q = 5 l/min) Std. setting bar (Q = 5 l/min)	Cod. ordinazione Ordering code	Colore Colour
05	5-50	11.5	50	03.51.01.077	nero black
10	30-100	23.5	100	03.51.01.076	blu blue
20	50-210	47	200	03.51.01.075	verde green
35	100-350	82	350	03.51.01.059	giallo yellow

Y	ATTACCHI / PORT SIZE	
	V1-C1	
02	G 3/8	
03	G 1/2	