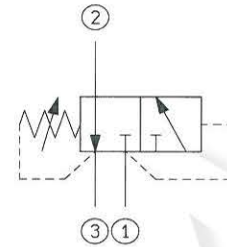
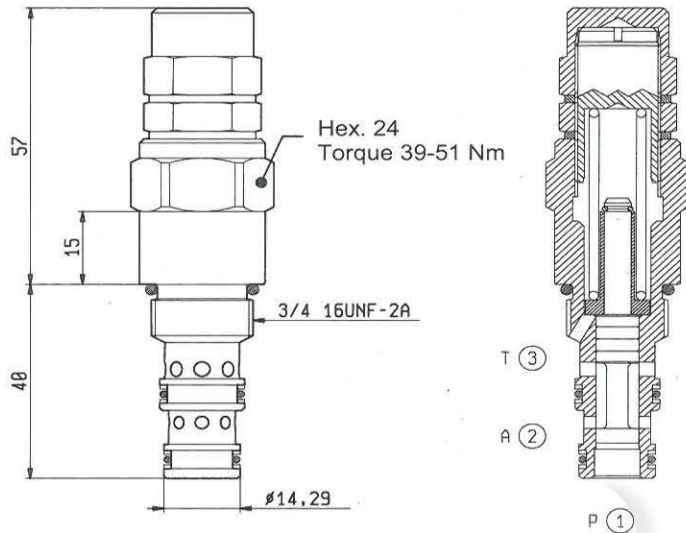


Part number:

**DIRECTIONAL CONTROL VALVES
HYDRAULIC AUTOMATIC SWITCHING
SPOOL 3-WAY 2-POSITION CARTRIDGE STYLE**

VDP-32

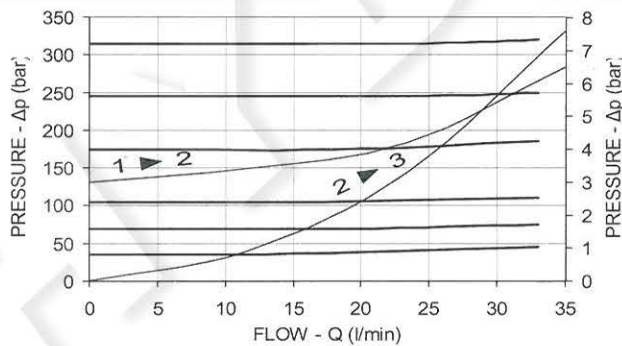
OD.71.01.51 - Z



TECHNICAL DATA

Maximum Operating Pressure	315	bar
Rated Flow	30	l/min
Cavity - Tooling (051-E)	page 7.01.110	
Weight	0.195	kg
Fluids - Temperatures	page 7.01.040	
Testing Conditions - Seals	page 7.01.040	
Internal Leakage	page 7.01.050	
Filtration : 25 µm nominal or better	unrestricted	

Pressure settings different from standard have to be specified when ordering.



SWITCHING PRESSURE
bar

Z	SWITCHING PRESSURE				
	Adj. pressure range	Standard setting			
01	3-25	5			
02	20-60	35			
04	70-100	90			
